

# STOP THE SPREAD

## PROTOCOLS FOR PREVENTING CORONAVIRUS DISEASE (COVID-19)

PRACTICE SOCIAL DISTANCING:  
STAY 6 FT AWAY FROM OTHERS AT ALL TIMES.



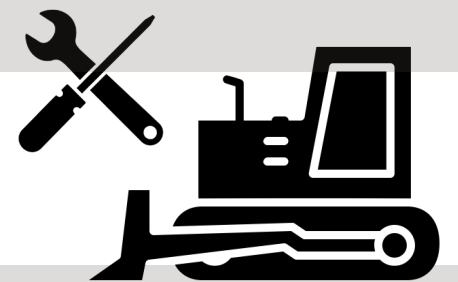
COVER ALL COUGHS AND SNEEZES WITH A TISSUE OR YOUR ELBOW:  
THROW THE TISSUE IN THE TRASH.

AVOID TOUCHING YOUR EYES, NOSE, AND MOUTH.



REGULARLY DISINFECT TOUCHABLE SURFACES, ESPECIALLY  
IN JOBSITE TRAILERS WITH HIGH TRAFFIC.

FREQUENTLY SANITIZE COMMONLY-TOUCHED EQUIPMENT.  
SANITIZE AND AVOID SHARING TOOLS.



WASH YOUR HANDS OFTEN FOR 20 SECONDS WITH SOAP  
AND WATER OR USE 60% ALCOHOL-BASED SANITIZER.

FOR ADDITIONAL INFORMATION/QUESTIONS, PLEASE CONTACT YOUR  
PORT CITY SUPERVISOR OR SAFETY MANAGER, TRISTAN MAPLES.  
TMAPLES@LANDMARK-SC.COM | (843)714-9590

